

Coarse Wavelength Division Multiplexer – CWDM > 3port, Add or Drop, ultra blocking



Features

- Devices may be used as multiplexer or demultiplexer
- Epoxy-free optical path, ITU G.694.2 and Telecording GR1221 compliant
- Low insertion losses
- Packaging on line card or in CWDM sub-system for rack mounting on request

Applications

- Passes one CWDM channel (to be selected by order code). Reflects all other CWDM channels
- Metro Core, Metro Access, Metro Enterprise, Cable TV, 3G Telephony (UMTS), Datacomm, WAN, RFTS, Sensor Applications
- For analog and digital transmission systems

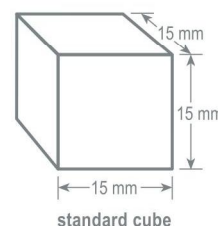
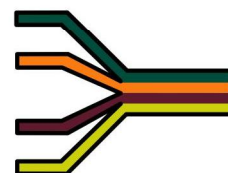
Specifications

Parameters	Coarse Wavelength Division Multiplexer – CWDM (all values refer to single mode)	
Center Wavelengths [nm]	1271 / 1291 / 1311 / 1331 / 1351 / 1371 / 1391 / 1411 / 1431 / 1451 / 1471 / 1491 / 1511 / 1531 / 1551 / 1571 / 1591 / 1611 (to be selected via order code)	
Optical Bandwidth	> 13 nm	
Insertion Loss *	pass	< 0.7 dB
	reflect	< 0.4 dB
Isolation **	Reflected wavelenghts at Pass Port > 30 dB (adja. ch.) / > 40 dB (non-adja. ch.)	
	Passed wavelenghts at Reflect Port > 12 dB	
	Isolation Spectral Range 1260-1620 nm	
Return Loss *	> 50 dB	
Directivity	> 50 dB	
Polarization Dependent Loss	< 0.1 dB	
Max. optical power	250 mW	
Operating Temperature	-40°C to 85°C	
Storage Temperature	-40°C to 85°C	
Package Dimensions	cylindric 4.2mm diameter and 43mm length	

* With passband, valid over full temperature range and at all states of polarization but without connector losses.

** Valid over full temperature range and at all wavelengths across the channel.

Our COLOR-Cubes bring color into play.



All information contained herein is believed to be accurate and is subject to change without notice. No responsibility is assumed for its use. Cube Optics AG, its subsidiaries and affiliates, or manufacturer, reserve the right to make changes without notice, to product design, product components and product manufacturing methods. Some specific combinations of options may not be available. Please contact Cube Optics AG for more information.

Ordering Information

Indicate your requirements by selecting one option from each configuration table. Please write the corresponding codes in the available boxes to form your part number. For more information on this or other products and their availability, please contact Cube Optics AG at +49-6131-69851-0 or via e.mail at sales@cubeoptics.com, or visit our website at www.cubeoptics.com.

Ordering example: C-13-27-S-S-02-1-B-15

C - - - - S - - -

grade	code
Standard	S
Premium	P

Center wavelengths [nm]	code
1271	27
1291	29
1311	31
1331	33
1351	35
1371	37
1391	39
1411	41
1431	43
1451	45
1471	47
1491	49
1511	51
1531	53
1551	55
1571	57
1591	59
1611	61

Fiber length	code
0.5 m	A
1 m	B

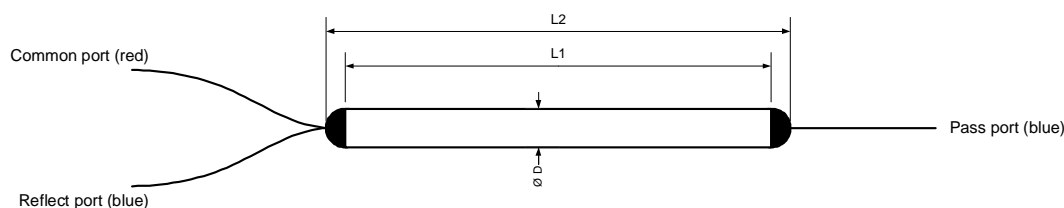
fiber type an packaging	code
Corning SMF-28™ (9,125,250 μm) 900 μm loose tube	1
Corning SMF-28™ (9,125,250 μm) 250 μm coating	2

Connector in/out* code	code
none	0
SC/PC	1
FC/PC	2
SC/APC**	3
FC/APC**	4
LC/PC	5
MU/PC	6
E2000	7
E2000/HRL**	8
ST/PC	9

connectors only available in combination with loose tube fiber protection
 * device regarded as demultiplexer
 ** 8° angular polishing

Further configuration on request!

Housing



Parameters	
Ø D	4.2 +/-0.1mm
L 1	40 +/-0.1mm
L 2	43 +/-1mm