

ConRep Fiber Media Converters

> CRB1-1000ES



Stand-Alone Fast Ethernet to Fiber Media Converter

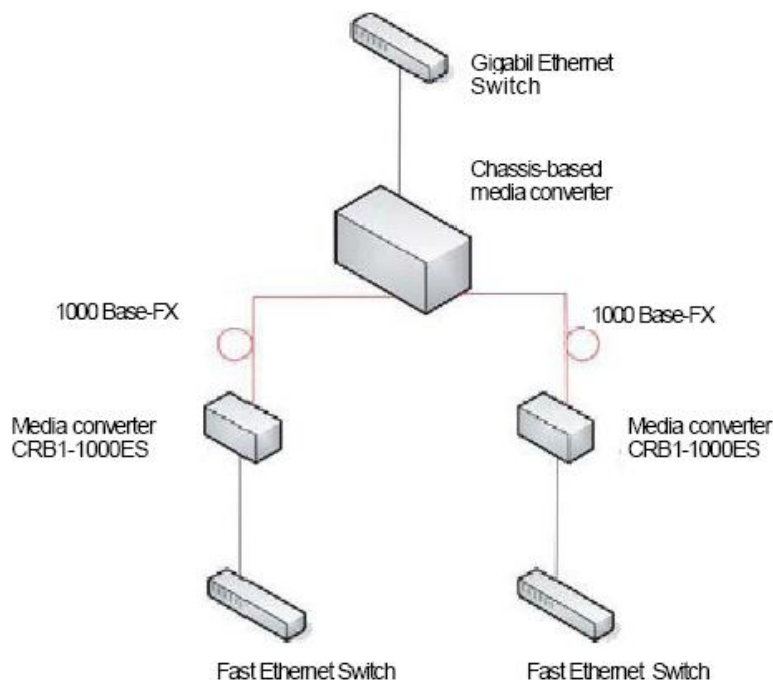
The CRB1-1000ES is a standalone optical fiber media converter for 10/100/1000Base TX to 1000Base-SX/LX that also provides NMS functions for Link- Loss-Forwarding, Remote-Monitoring-Status, and Loop-Back-Test. When auto-negotiation is selected, these units will automatically tailor themselves to convert speed or duplex, depending on your specific network needs.



Features

- Ability to force 10Mbps or 100Mbps or 1000Mbps on UTP port
- Auto-Cross over for MDI/MDIX on UTP port
- Auto-Negotiation on UTP port
- Full or Half-Duplex on UTP port
- Max. Packet Size: 1632 Bytes
- Store and Forward Switching Mechanism
- Supports Auto / Force Mode on FX port
- Supports link-loss-forwarding function, loop-Back test, remote state monitor
- MAC address: 8K Buffer: 128KbyteAuto Crossover for MDI/MDIX at TP port

Application



ConRep Fiber Media Converters

> CRB1-1000ES



Specifications

Standard		IEEE 802.3 10Base-T, 802.3u 100Base-TX and 100Base-FX standards
LEDs		PWR, LLF, Fiber Link, TP Link/ Duplex/Speed
Power	CRB1	External AC Adapter; 12VDC@ 1A
	CRB2	AC Model: 100 – 240 VAC \pm 10% Frequency: 50 – 60Hz DC Model: 24 – 48VDC \pm 10%
Environment	Temperature	0 – 50°C (Operating) 0 – 70°C (Storage)
	Humidity	20 – 80% non condensing (Operating) 10 – 90% (Storage)
Power Consumption	CRB1	< 4W
	CRB2	< 4W
Dimensions(WxDxH)	CRB1	85.6mm x 122.6mm x 20mm
	CRB2	85.6mm x 191.7mm x 30mm
Weight	CRB1	340g
	CRB2	550g
Compliance		CE, FCC Class A
MTBF		65000 Hours

Ordering Information

Order Code: CRB1-1000ES

Corporate Office:
Cube Optics AG
Robert-Koch-Strasse 30
55129 Mainz
Germany

Fon: +49-6131-69851-0
Fax: +49-6131-69851-79
e.mail: sales@cubeoptics.com

www.cubeoptics.com