

# ConRep Fiber Media Converters

## > Fiber Managed Platform

### CRB1-10/100F & CRB2-10/100F



#### Stand-Alone Fast Ethernet to Fiber Media Converter

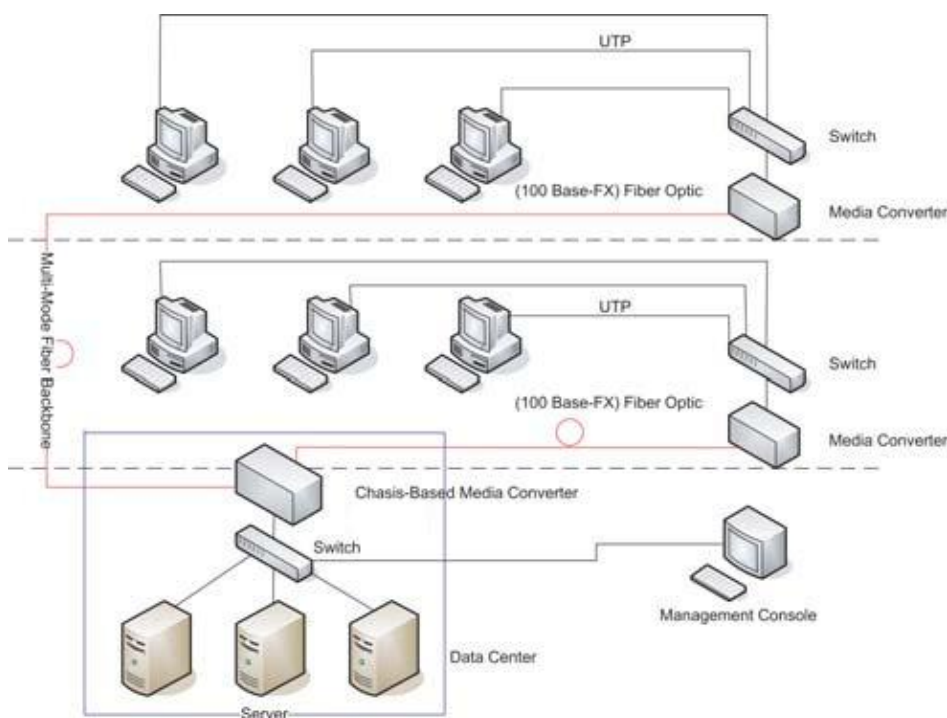
CRB1-10/100F and CRB2-10/100F series are Fast Ethernet 10/100Base-TX to 100Base-FX manageable standalone media converters, which give you the options to choose from the most popular fiber cabling connectors, ST, SC, or FC. Both multi-mode and single mode converter models are available as well as BiDi which allows bi-directional transmissions using only a single fiber cable. When auto-negotiation is selected, these units will automatically tailor themselves to convert both half-duplex and full-duplex signals, depending on your specific network needs. LED indicators signal the power status of the converter, UTP port speed, Link, and duplex status, FX port Link and duplex status.



#### Features

- Ability to force 10Mbps or 100Mbps at TP port
- Auto Crossover for MDI/MDIX at TP port
- Auto Negotiation at TP port
- Optional Chassis Versions with SNMP available
- Full or Half-Duplex on copper
- Store and forward Switching mechanism
- Supports link-loss-forwarding function, loop-Back test, and remote state monitor Flow Control

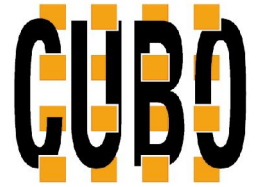
#### Application



# ConRep Fiber Media Converters

## > Fiber Managed Platform

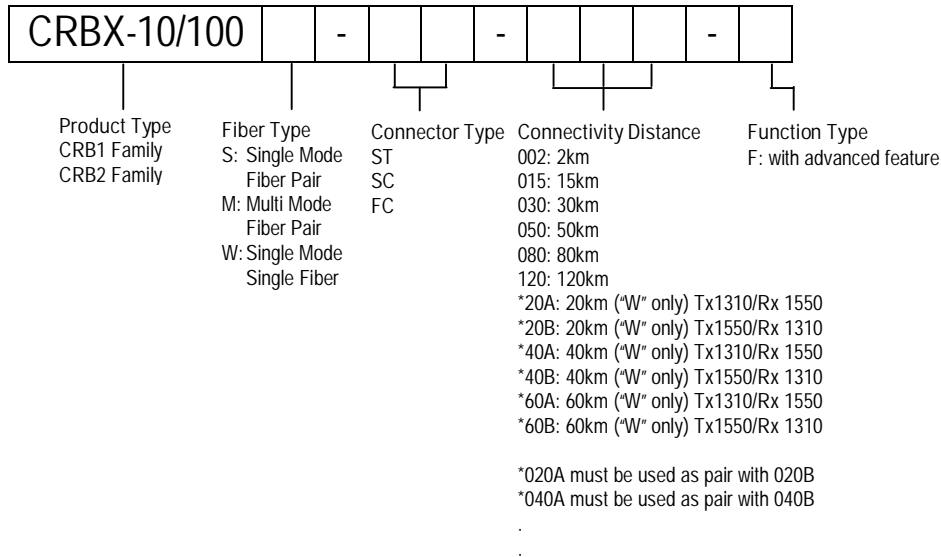
### CRB1-10/100F & CRB2-10/100F



#### Specifications

Standard		IEEE 802.3 10Base-T, 802.3u 100Base-TX and 100Base-FX standards
LEDs		PWR, LLF, Fiber Link, TP Link/ Duplex/Speed
Power	CRB1	External AC Adapter; 9VDC@ 1A
	CRB2	AC Model: 100 – 240 VAC ± 10% Frequency: 50 – 60Hz DC Model: 24 – 48VDC ±10%
Environment	Temperature	0 – 50°C (Operating) 0 – 70°C (Storage)
	Humidity	20 – 80% non condensing (Operating) 10 – 90% (Storage)
Power Consumption	CRB1	< 4W
	CRB2	< 4W
Dimensions(WxDxH)	CRB1	85.6mm x 122.6mm x 20mm
	CRB2	85.6mm x 191.7mm x 30mm
Weight	CRB1	340g
	CRB2	550g
Compliance		CE, FCC Class A
MTBF		257063 Hours

#### Ordering Information



Corporate Office:  
Cube Optics AG  
Robert-Koch-Strasse 30  
55129 Mainz  
Germany

Fon: +49-6131-69851-0  
Fax: +49-6131-69851-79  
e.mail: sales@cubeoptics.com

www.cubeoptics.com