

Coarse Wavelength Division Multiplexer – CWDM

> CWDM bandsplitter 9+8 skip 1



Features

- Devices may be used as multiplexer or demultiplexer
- High isolation
- Epoxy-free optical path, ITU G.694.2 and Telecording GR1221 compliant
- Low insertion losses
- Packaging on line card or in CWDM sub-system for rack mounting on request

Applications

- Combines / separates CWDM channels 1271 - 1431 and 1471 - 1611
No operation for channel 1451 (skip1)
- Metro Core, Metro Access, Metro Enterprise, Cable TV, 3G Telephony (UMTS), Datacomm, WAN, RFTS, Sensor Applications
- For analog and digital transmission systems

Specifications

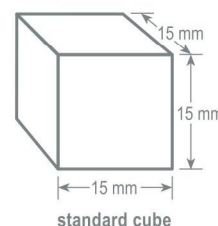
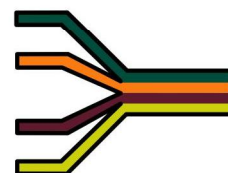
Parameters	Coarse Wavelength Division Multiplexer – CWDM (all values refer to single mode)		
Channels	2 bands		
Center wavelengths [nm]	1310 / 1550		
Wavelength range	Pass Band	1464 nm - 1640 nm	
	Reflect Band	1260 nm - 1438 nm	
Insertion Loss *	< 1.0 dB		
Isolation **		standard iso	high iso
	Pass Band at Reflect Port	> 15 dB	> 30 dB
	Reflect Band at Pass Port	> 30 dB	> 30 dB
Return Loss *	> 45 dB (50 dB typ.)		
Directivity	> 50 dB		
Polarization Dependent Loss	< 0.1 dB		
Max. optical power	250 mW		
Operating Temperature	-5°C to 70°C		
Storage Temperature	-40°C to 85°C (when removed from plastic package)		
Package Dimensions	1x4 device, cylindric 4.2mm diameter and 51mm length		

* With passband, valid over full temperature range and at all states of polarization but without connector losses.

** Valid over full temperature range and at all wavelengths across the channel.

Additional components according to your specifications on request! Please contact Cube Optics for further details.

Our COLOR-Cubes bring color into play.



All information contained herein is believed to be accurate and is subject to change without notice. No responsibility is assumed for its use. Cube Optics AG, its subsidiaries and affiliates, or manufacturer, reserve the right to make changes without notice, to product design, product components and product manufacturing methods. Some specific combinations of options may not be available. Please contact Cube Optics AG for more information.

Ordering Information

Indicate your requirements by selecting one option from each configuration table. Please write the corresponding codes in the available boxes to form your part number. For more information on this or other products and their availability, please contact Cube Optics AG at +49-6131-69851-0 or via e.mail at sales@cubeoptics.com, or visit our website at www.cubeoptics.com.

Ordering example: SH-1-L-2-C-S-01-2-A-15

SH - - - - - - - - -

optional features	code
Standard iso	1
High iso	2

Fiber length	code	Connector in/out* code
0.5 m	A	none
1 m	B	SC/PC
		FC/PC
		SC/APC**
		FC/APC**

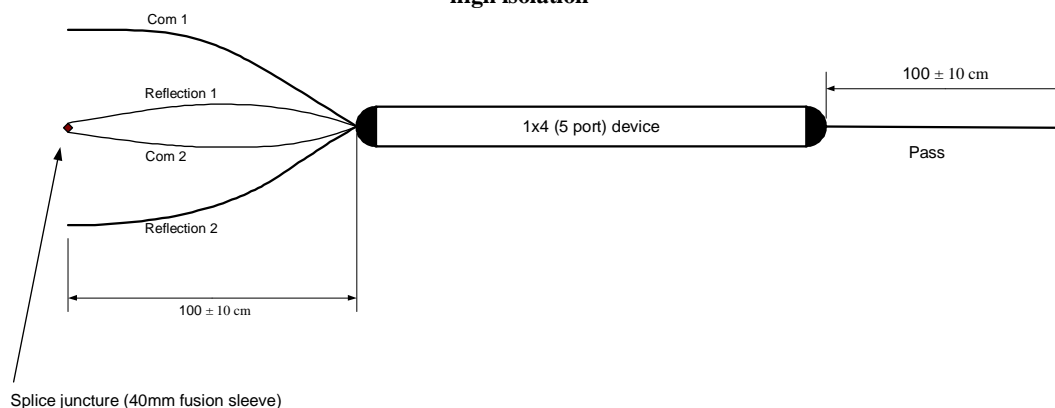
fiber type an packaging	code
Corning SMF-28™ (9,125,250 μm) 900 μm loose tube	1
Corning SMF-28™ (9,125,250 μm) 250 μm coating	2
Multi mode fiber GI (50,125,250 μm) 900 μm loose tube	3
Multi mode fiber GI (50,125,250 μm) 250μm coating	4

LC/PC 5
MU/PC 6
E2000 7
E2000/HRL** 8
ST/PC 9
connectors only available in combination with loose tube fiber protection
* device regarded as demultiplexer
** 8° angular polishing

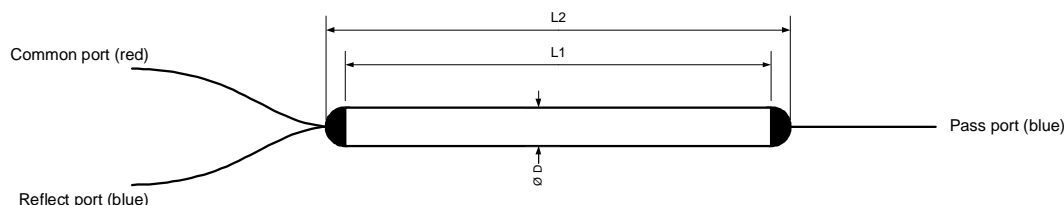
Further configuration on request!

Housing

high isolation



standard isolation



Parameters	
∅ D	4.2 +0/-0.1mm
L 1	48 +/-0.1mm
L 2	51 +/-1mm